

## NAIL CARE

### GEL MANICURE 8 2 5

Everything you need to get your fingers ready to cruise through the day. Starts with an Essential oil soak. Cuticle Care. Hand massage topped with your favorite VEGAN polish.

- Cleaning Only 385
- Regular Polish 550
- Gel Removal 285

### GEL PEDICURE 8 7 5

Tired feet? Soak in lukewarm water with our signature essential oil for Antibacterial properties, Cuticle care, and massage, topped with your favorite lacquer colors.

- Cleaning 475
- Regular Polish 615

### QUICK COAT - POLISH CHANGE

This express lacquer change will give you a breath of fresh air feeling.

- Regular Polish 315
- Feet 355
- Gel Polish 495

### GENTLEMAN'S FOOT SPA 8 7 5

Designed specifically for men. Our signature Himalayan Salt soak and scrub with natural oils, for antibacterial, Cuticle care, topped with light massage & moisturizing lotion, nail trimming.

- Manicure 425
- Pedicure 485
- Foot spa with Pedicure 950

### PARAFFIN TREATMENT 5 8 5

This therapeutic wax soak will relieve your tired hands & feet. Great for supporting healthy blood circulation.

- Hand 585
- Feet 650

### FOOT SPA 8 5 5

Tulua Signature treatment for a luxurious experience. Starts with essential oil soak, callous removal, Himalayan Salt scrub, or Moisturizing Scrub, with a seaweed mask to lock moisture topped with a light massage.

- With Pedicure Reg. Polish 950
- With Pedicure Gel. Polish 1295

### FOOT SPA KIDS 5 9 5

Pedicure foot spa without filing

### HAND SPA 4 8 5

Total relaxation for the hands.

- With Gel Manicure 1050
- With Regular Manicure 685

### NAIL ART

Nail art rhinestones. Hand stroke designs, stamping & stickers are available.

- Per Nail / Additional Color 55
- Rhinestone 85+
- Nail Art Free Hand 100+

### PETIT COAT -KIDS 2 4 5



# LASH & BROWS

## EYELASH

### EYELASH EXTENSION 1200

The eyes are the window to the soul. Give your look a boost with Korean eyelash extension with No tears formula. Available in length variations.

Mascara look	1500
Doll Eye	1700
Cateye	1700
Wispy	1800
ANIME	2000
Vixen ( Unlimited)	2400

### EYELASH EXTENSION SET 2500 (with Bottom Lash)

Dolleye, Cateye, Wispy with 1 time free retouch

### EYELASH PERMING 1200

A Natural lash lift. So naturally yours!

### RETOUCH 655

### FILL 445

### EYELASH REMOVAL 450

## BROWS

### BROW THREADING

Keeping everything in the right Arc!

- Threading Tidy 285
- Brow Shape 385

### BROW LAMINATION 1250

With Tidy

### BROW TINT 585

## WAXING

Using quality warm wax, perfect for sensitive skin

- Full arm 495
- Underarm 350
- Half arm 395
- Half leg 485
- Upper lip 285
- Bikini 600
- Brazillian 1200
- Full Leg 785



# SPA PACKAGE & MASSAGE

## MASSAGE

### HAND MASSAGE

This uses a traditional massage technique that works with the body's natural energy fields to aid in relaxation, stress reduction, and physical relaxation.

- 30 Minutes **425**
- 1 Hour **485**

### FOOT MASSAGE

traditional deep tissue massage technique that works with the body's natural energy fields to aid in relaxation, stress reduction, and physical relaxation.

- 30 Minutes **495**
- 1 Hour **650**

### WHOLE BODY MASSAGE

Combination of swedish and Shiatsu techniques to aid physical relaxation.

- 1.30 Hr **1200**
- 1 Hour **950**

## ELITE HAND SPA

Starts with Hand Manicure, capped with traditional hand reflex technique that works with the body's natural energy fields to aid in relaxation, stress reduction, and physical relaxation. Nail lacquer color is optional.

**950**

## ELITE FOOT SPA

Buff those callous away! foot spa with pedicure cleaning, capped off with traditional deep tissue reflex technique that works with the body's natural energy fields to aid in relaxation, stress reduction, and physical relaxation. Nail lacquer color is optional

**1400**

## 5+1 PACKAGE

### FOOT SPA + MANICURE + PEDICURE / SESSION

The signature SPA Treatments you always love. Save on spa packages valid for 6 months, also transferrable to family and friends!

**6,300 ( for 6 sessions)**

*SAVE UP TO 1,770.00 ON THIS PROMO*

OPEN DAILY 10.00 AM - 9.00 PM | TULUAPH.CARRD.CO





# NAIL EXTENSIONS

Nail extensions are the ultimate glam accessory, turning your fingertips into dazzling works of art.

GEL X	<b>3,000</b>
POLY GEL	<b>2,500</b>
ORLY BUILDER	<b>3,000</b>
DIP POWDER	<b>2,500</b>
INFILL	<b>2,000</b>
REPAIR	<b>345/NAIL</b>







# ORLY BUILDER

Achieve your dream nail length and style with premium ORLY builder gel products for the ultimate luxe pamper experience.

Infill	<b>2500</b>
Overlay	<b>3000</b>
Gel FX	<b>3500</b>





# NAIL REPAIR

Ideal for nail biters, those with short and brittle nails, or anyone wanting a break from extensions. A Builder in a Bottle (BIAB) gel manicure provides extra strength to your natural nails while keeping them looking flawless.

RUSSIAN MANI + REGULAR BIAB	<b>2500</b>
RUSSIAN MANI+ ORLY BIAB	<b>3000</b>
REGULAR MANI + REGULAR BIAB	<b>2000</b>
REGULAR PEDI + REGULAR BIAB	<b>2400</b>



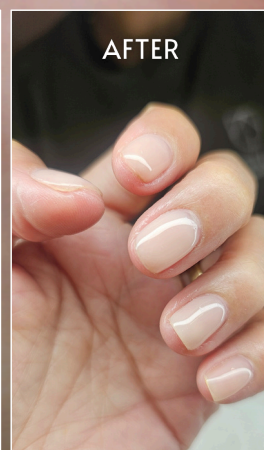
BEFORE



AFTER



BEFORE



AFTER





# RUSSIAN MANICURE

*BY APPOINTMENT ONLY*

RUSSIAN MANI CLEANING ONLY	<b>1200</b>
RUSSIAN MANI + REGULAR ORLY POLISH	<b>1400</b>
RUSSIAN MANI + GEL POLISH	<b>1500</b>
RUSSIAN MANI + OVERLAY	<b>3500</b>
RUSSIAN PEDICURE	<b>1200</b>
RUSSIAN PEDI+ REGULAR ORLY POLISH	<b>1300</b>
RUSSIAN PEDI + GEL POLISH	<b>1500</b>







# *LED* LASH EXTENSIONS

Experience the future of lash artistry with a process that's both quicker and gentler, giving you flawless results every time with no downtime and longer retention

ANY DESIGN

**3500**







TULUA

# PACKAGES

MAKE THE MOST OUT OF YOUR ORGANIC WELLNESS RETREAT AT TULUA WITH OUR THOUGHTFULLY CURATED PACKAGES



## REG MANI + REG PEDI

Regular Price: PhP 1165

PHP 1,000

## GEL MANI + GEL PEDI

Regular Price: PhP 1,700

PHP 1,575

## GEL MANI + REG PEDI + FOOT SPA

Regular Price: PhP 1,775

PHP 1,625

## GEL MANI + GEL PEDI + FOOT SPA

Regular Price: PhP 2,120

PHP 1985

## REG MANI + REG PEDI + LASH EXTENSIONS

Regular Price: PhP 2965

\*wispy or doll eye style only

PHP 2,785

## GEL MANI + GEL PEDI + LASH EXTENSIONS

Regular Price: PhP 3,500

\*wispy or doll eye style only

PHP 3,250



# Elite

## SPA PARTY PACKAGE

Gather your squad of 10-12 pax and enjoy an elite experience at Tulua with 3 hours private use of our spa area for Php 15,000.

### INCLUSIONS

- Full private use of spa area for 3 hours.
- Php 10,000 worth of services.
- Services include mani, pedi, foot spa, paraffin.
- Php 2,000 Tulua Café credits.
- 1 Bottle of champagne and Charcuterie Box worth Php 3,000.
- Bridal Sash (optional).

